

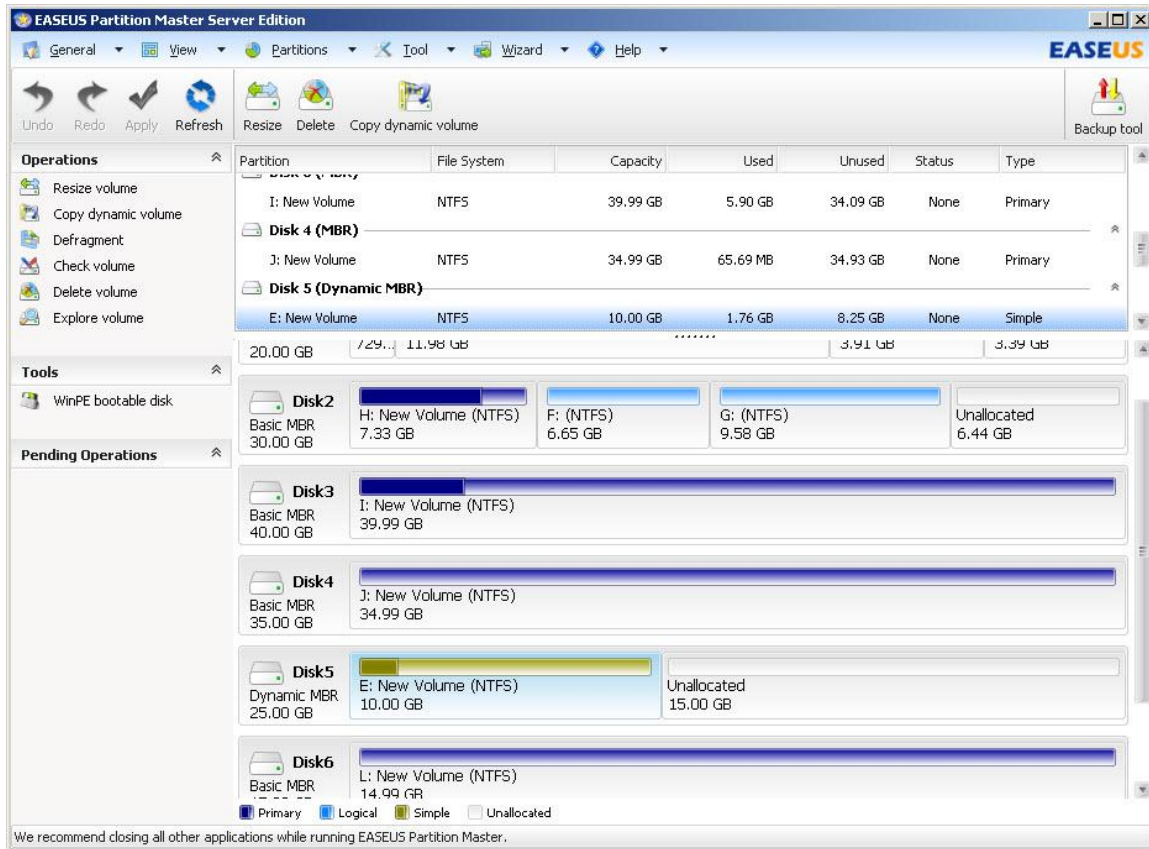
EaseUS Partition Master



Reviewer's Guide

Contents

Introduction	2
Chapter 1	3
What is EaseUS Partition Master ?.....	3
Versions Comparison	4
Chapter 2	5
Using EaseUS Partition Master	5
Partition Manager	5
Disk & Partition Copy Wizard	12
Partition Recovery Wizard	14
Chapter 3	16
Other Features	16
Chapter 4	16
Frequently Asked Questions about EaseUS Partition Master	16
Hardware requirements	17
System requirements	17
Supported file systems & hard disk types.....	18
Chapter 5	18
About EaseUS	18
Technical Support.....	18
Contact Information.....	18



Introduction

This guide is designed for members of the media who will be evaluating EaseUS Partition Management software. This guide will help you assess major features and benefits of the product and introduce you to key features. You also will learn what makes EaseUS Partition Master such easy software to manage your partitions without precious data lost.

Chapter 1

What is EaseUS Partition Master?

EaseUS Partition Master is a comprehensive application ideal for managing your computer partitions whether you have partition experience or not. It not only provides convenient user-interface to simplify your tasks but also offers you many user-friendly functions to manage your partitions.

With Partition Recovery Wizard integrated into EaseUS Partition Master, this one can be called a really comprehensive toolkit for PC and server users. It covers a full range of features including Partition Manager, Partition Recovery Wizard and disk & partition copy and more.

EaseUS Partition Master also allows users to create bootable disk to enable you manage hard disk partitions when Operating System crashes, resize the primary drive to reinstall other Operating Systems or even manage partitions on a computer without Operating System.

Key Advantages of Using EaseUS Partition Master

- It is an ALL-IN-ONE partition solution and the easiest and most convenient hard disk partition manager toolkit including **Partition Manager, Disk & Partition Copy Wizard and Partition Recovery Wizard**.
- Its built-in **WinPE 3.0 based bootable disk** enable you manage hard disk partitions when Operating System inaccessible.
- Copy Wizard to copy partition or migrate entire hard disk to another **without Windows reinstallation**.
- Partition Recovery Wizard to recover deleted or lost partitions.
- Stable partition management which will protect your data.

Versions Comparison

Features	Home Edition	Professional Edition	Server Edition	Unlimited Edition	Technician Edition
Partition Manager					
Basic partitioning: create, format, delete, explore, label partitions	√	√	√	√	√
Advanced partitioning: resize/move, merge, split, convert, wipe, hide/unhide, set an Active Partition, defrag disk, wipe disk, rebuild MBR, Convert dynamic disk to basic disk, GPT disk partitioning, Convert primary partition to logical, Convert logical partition to primary, Wipe Partition, Disk surface test, Linux partition management: delete, create, format, recover EXT2/EXT3 partition, etc.	√	√	√	√	√
Manage partitions with WinPE bootable CD	–	√	√	√	√
Manage partitions with Linux bootable CD	–	√	√	√	√
Disk & Partition Copy Wizard					
Disk & partition copy	√	√	√	√	√
Copy Dynamic Volume	√	√	√	√	√
GPT disk/partition copy	√	√	√	√	√
Partition Recovery Wizard					
Recover deleted or lost partitions	√	√	√	√	√
Recover lost partitions after repartitioned hard drive	√	√	√	√	√
Operating System					
Windows 2000 Professional, XP, Vista, Windows 7 32 bit SP1	√	√	√	√	√
Windows XP, Vista, Windows 7 64 bit SP1	√	√	√	√	√
Windows 2000 Server/Advanced Server	–	–	√	√	√
Windows 2003 Server (32/64 bit)	–	–	√	√	√
Windows Home Server			√	√	√
Windows 2008 Server R2 SP1(32/64 bit)	–	–	√	√	√
Windows Home Server	–	–	√	√	√
Others					
For business users	–	√	√	√	√
Support MBR & GPT disk	√	√	√	√	√
Support removable device	√	√	√	√	√
Support hard disk from 2GB to 8TB	√	√	√	√	√

Allow unlimited usage within one company	-	-	-	√	√
Provide Technical Services to Clients	-	-	-	-	√
Free lifetime upgrades	-	-	-	-	√
Free Email Support	√	√	√	√	√
100% Data protection	√	√	√	√	√

Chapter 2

Using EaseUS Partition Master Partition Manager

The most common partition problem for computer users is that the Windows system partition runs out of space, the Windows system partition needs to be expanded. But for most users, changing partition structure requires Windows operating system reinstallation and formatting. The built-in partition manager function of EaseUS Partition Master is right to meet the need. It can expand the Windows system partition without Windows reinstallation and data loss.

Furthermore, increasing volumes of information requires companies to make better use of their hard drive capacity, so the need to reasonably resize, move, split, merge the partitions is more important than ever.

Any operations with hard drives are critical, so the reliability of performance is one of the most important requirements when choosing partition software. EaseUS Partition Master is not only reliable itself but also integrated with the Disk & Partition Copy Wizard and Partition Recovery Wizard to ensure 100% data security.

The most popular hard disk management functions include:

- Resize/Move partitions
- Extend NTFS system partition without reboot
- Merge partitions
- Resize dynamic volume

How to perform resize/move partitions:

Take shrink D drive and extend C drive for example:

Solution 1:

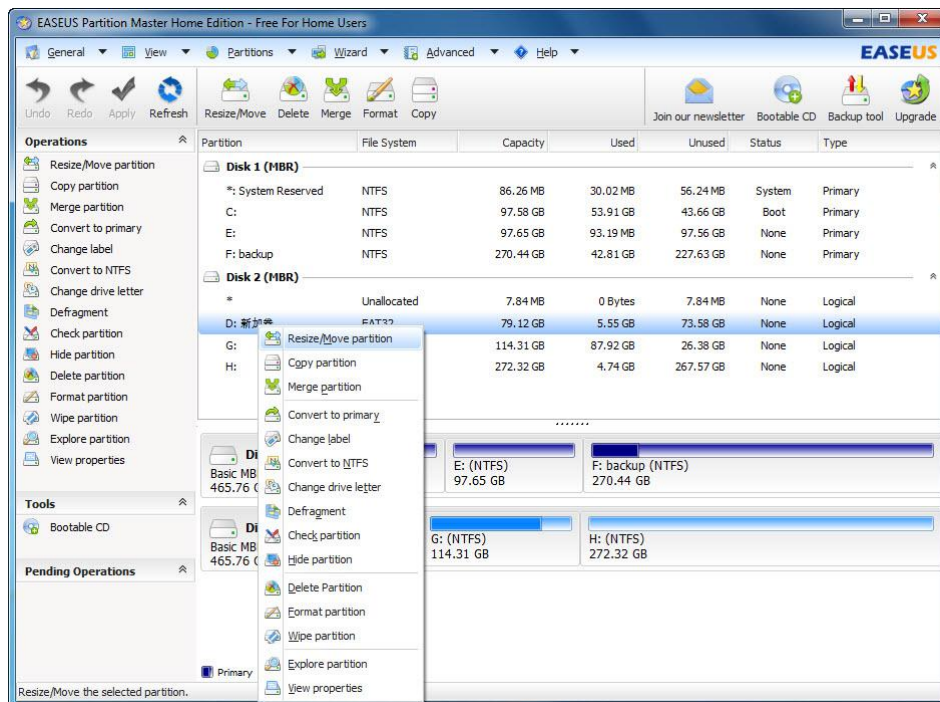
1. Select D: drive, right click D: and select "Resize/Move partition".
2. Position the mouse pointer on the left partition handle to shrink D: drive.

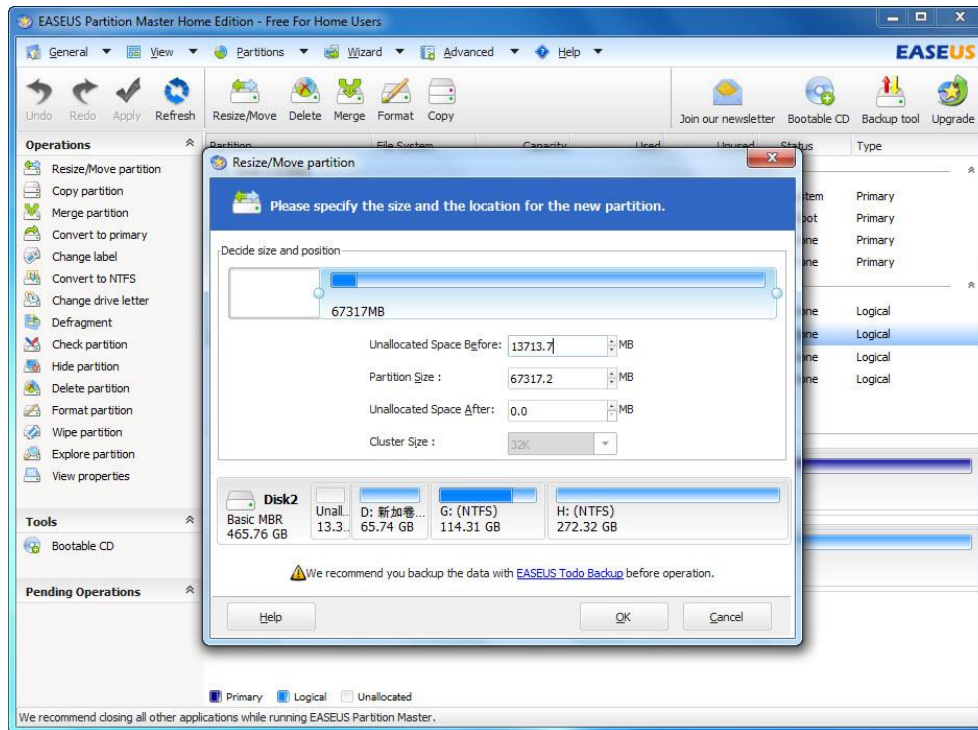
3. Click OK. Then there is unallocated space on the right side of C: drive.
4. Position the mouse pointer on the right handle of C: drive to extend it.
5. Click Apply

Solution 2:

1. Launch EaseUS Partition Master.
2. Right click C: drive and select "Resize/Move partition".
3. Position the mouse pointer on the right partition handle. Drag the handle to rightwards to extend C drive and click Ok.
4. Click Apply.

Screenshots:





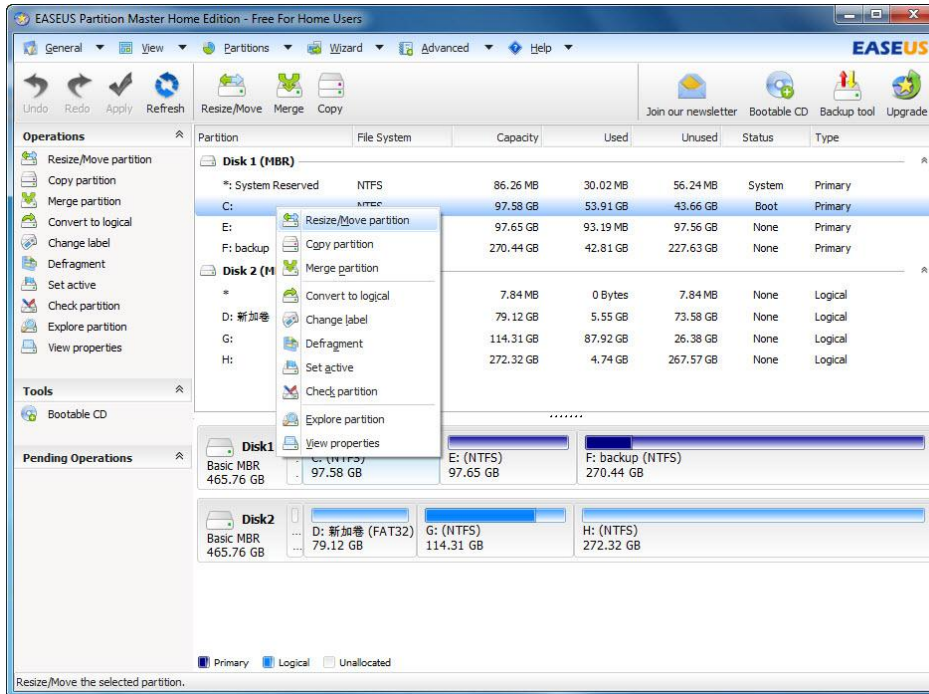
How to perform extend NTFS system partition without reboot:

Case: There is some unallocated space behind system partition

1. Select system partition, then right click system partition and choose "Resize/Move partition".
2. Extend system partition C: to a suitable size and click OK.
3. After extending system partition, you can preview it on disk map.
4. If you are satisfied with the operation you make, you will see the operations you do in Pending Operations. Just click "Apply".

You can also resize other NTFS partitions excluding NTFS system partition without reboot.
Before that you must ensure all applications in the partition are closed.

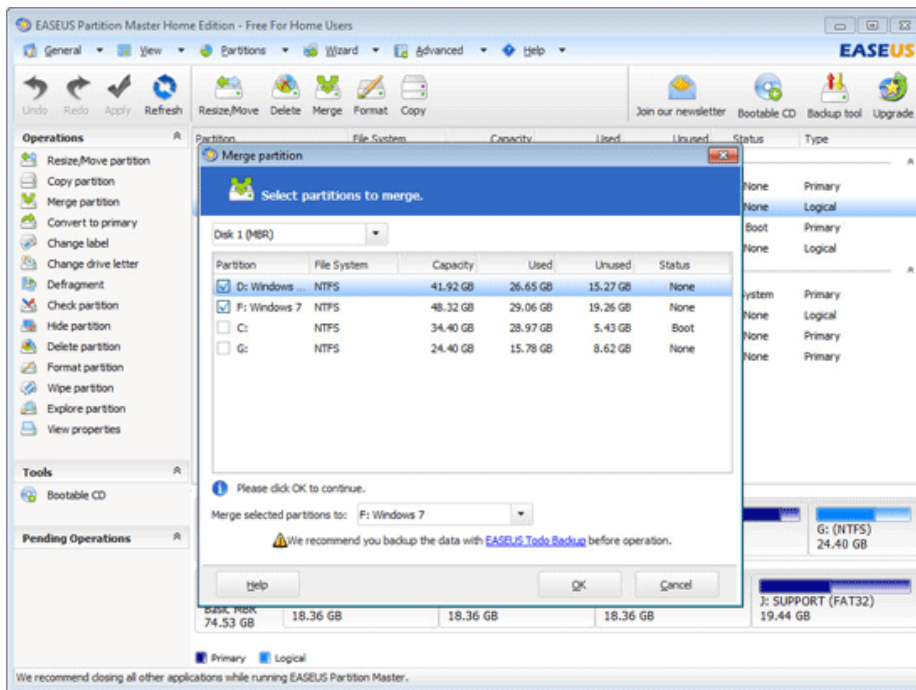
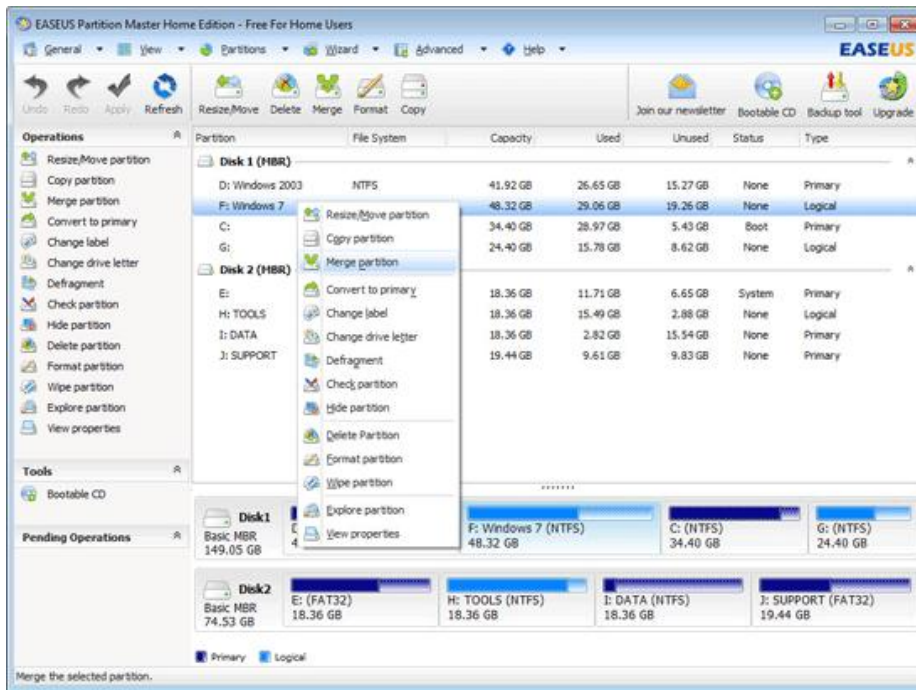
Screenshots:

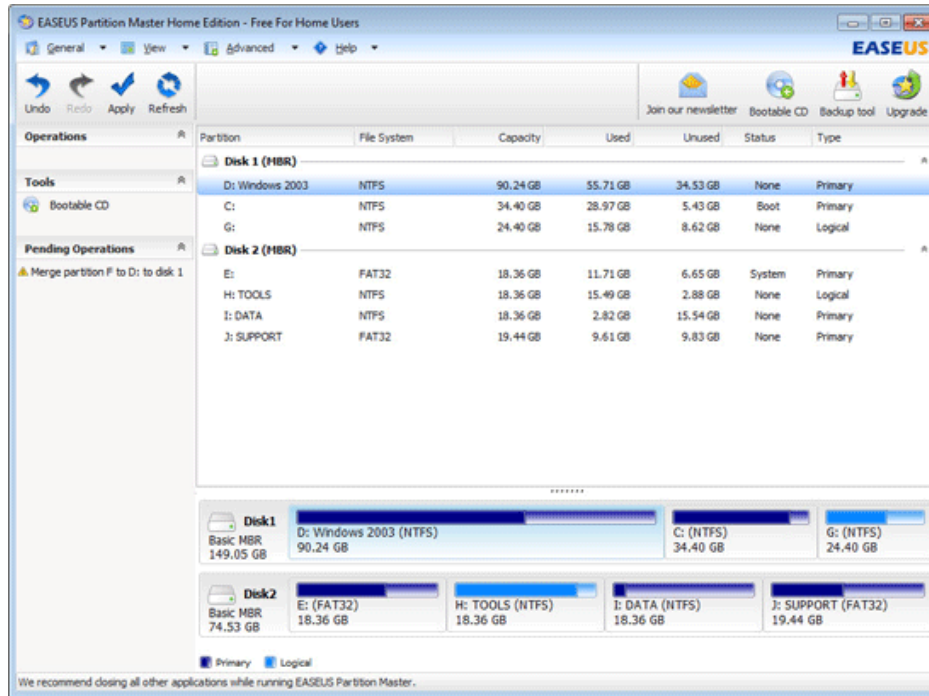


How to perform merge partitions:

1. Launch EaseUS Partition Master and go to the main screen.
2. Click the partition you want to merge on system disk, and then click Partitions and select Merge partition on toolbar. Or right click that partition on system disk and select Merge partition.
3. In this Merge partition window, you should first choose two neighboring partitions in the partition layout, and then choose the merge destination by selecting a partition label.
4. Click OK; the program will check file system on the partition.
5. Click Apply, you have successfully merged the partitions.

Screenshots:

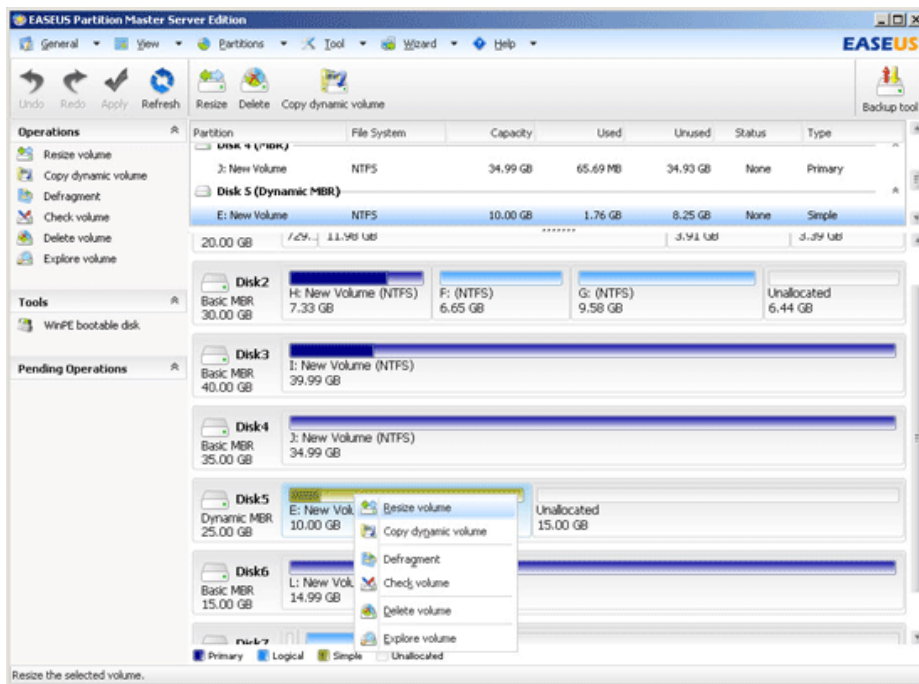
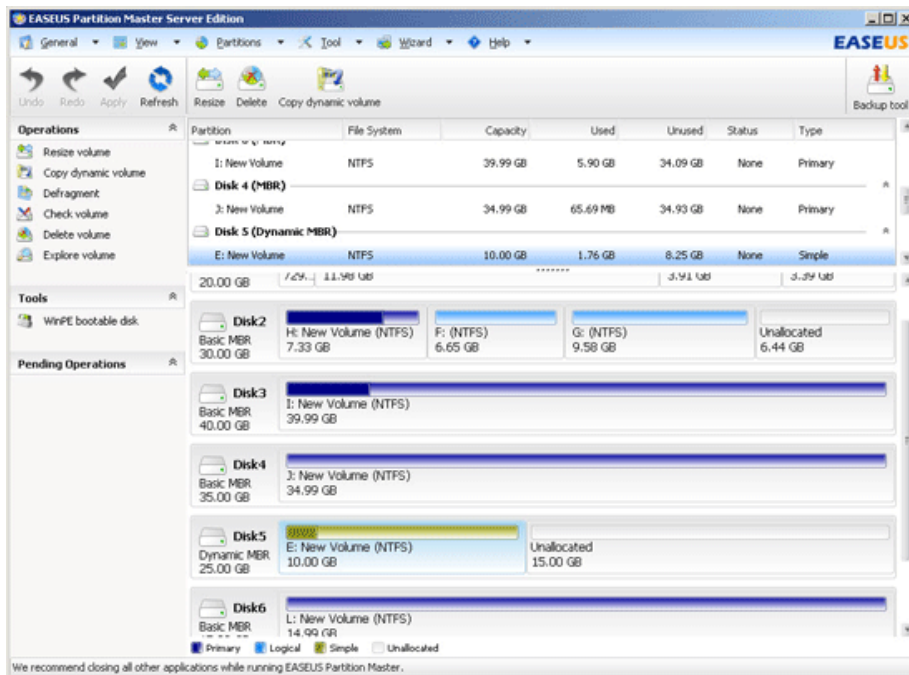


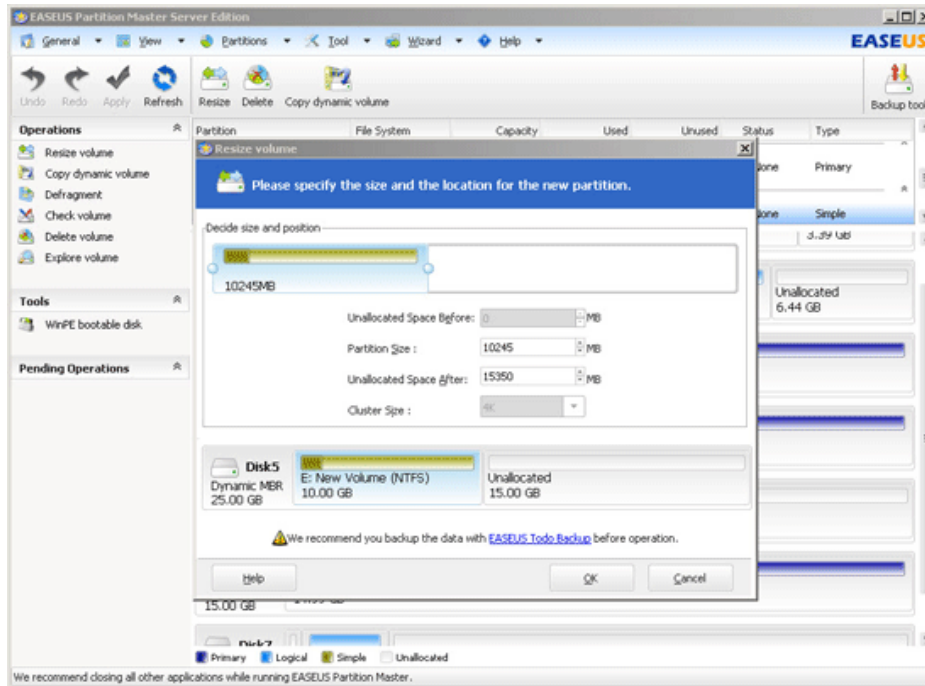


How to perform resize dynamic volume:

1. Download EaseUS Partition Master and install it on your computer.
2. Launch EaseUS Partition Master and go to main screen.
3. Right click the volume you want to resize, select Resize volume.
4. Position the mouse pointer on the left partition handle to extend or shrink volume E, or you can directly put in a size number.
5. Click OK, and you will see the size change of volume E in the disk layout.
6. Click Apply to execute the operation.

Screenshots:





Disk & Partition Copy Wizard

The Disk Copy is designed to copy your entire disk to a new hard drive. There was a time when upgrading to a new hard drive meant hours of downloading your data, applications, and operating systems to disks; then more hours of reinstalling everything to the new hard drive. With Disk and Partition Copy Wizard, you can quickly and easily create an exact copy of your hard disk, including the operating system, applications, preferences, settings, and data.

Partition Copy is designed to back up your partitions before the partition operations applied to the hard disk to prevent any data lost from program error or some other accidental incidents.

Disk and Partition Copy Wizard can also copy dynamic volume safely to basic disk and resize it indirectly.

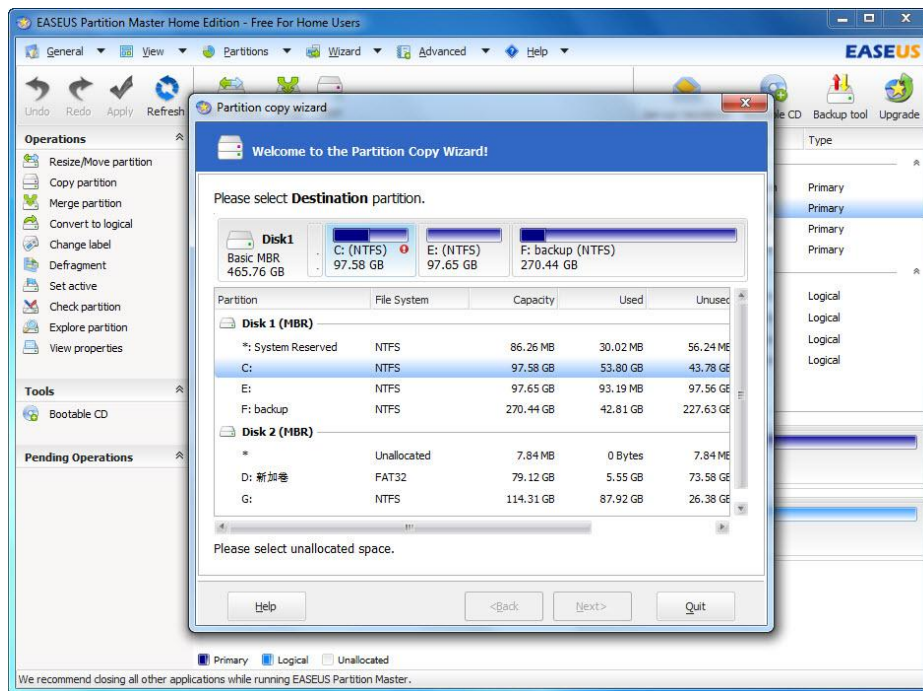
How to perform partition copy:

1. Launch EaseUS Partition Master. Select Wizard > Copy partition wizard.
2. Select the partition you want to copy as the source partition
3. Partition Copy Wizard will automatically check the partition and after check, click "Next".
4. Select unallocated space as a destination partition, click "Next".
5. Edit the destination partition. On a disk map, current size of the partition is displayed on the top of the dialog box. The map also depicts the used and unused space within the partition

and the free space surrounding the partition (if any exists). The minimum and maximum sizes that you can resize a partition appear below the map.

6. Click "Finish".
7. To preview the result on the left panel "Pending Operations". If it is right, then click "Apply".
8. Done.

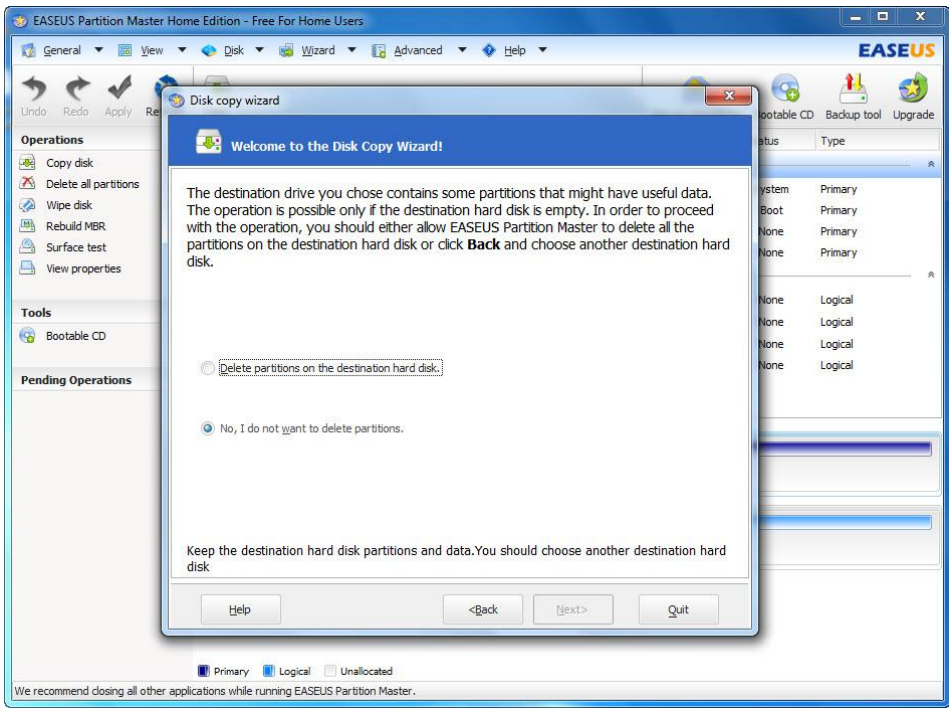
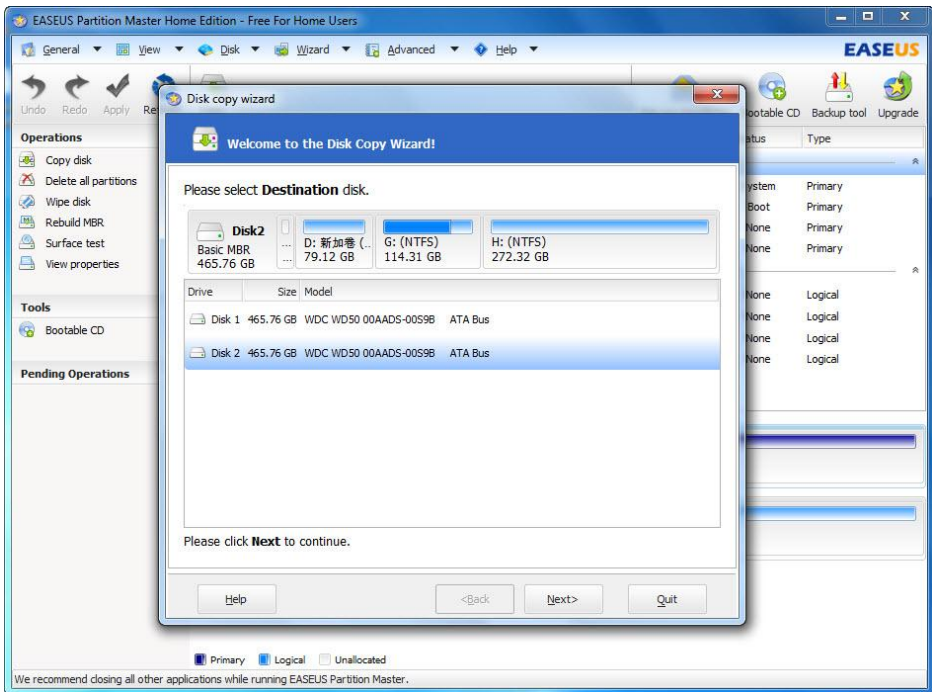
Screenshots:



How to perform disk copy:

1. Launch EaseUS Partition Master. Select Wizard > Copy disk wizard.
2. Select the disk you want to copy as the source disk.
3. Disk Copy Wizard will automatically check the source disk and after check, click Next.
4. Choose the Destination Disk - Disk 2, and then click "Next".
5. Confirm to delete the partitions and data on the destination disk. In order to proceed with the operation, you should either allow EaseUS Partition Master to delete all the partitions on the destination hard disk or click Back to choose another destination hard disk.
6. Resize partitions on the destination disk. On a disk map, current size of the partitions on the destination Disk is displayed on the top of the dialog box. Position the mouse pointer on the left or right partition handle; the mouse pointer changes to a double-headed arrow and drag the handle to the partition size you want. Click Next.
7. The destination disk information is displayed. Then click Finish to end disk copy.
8. To preview the result on the left panel "Pending Operations". If it is right, then click "Apply".
9. Done.

Screenshots:



Partition Recovery Wizard

Partition Recovery Wizard included into EaseUS Partition Master completely protects your partition, allowing you to recover deleted or lost partitions due to a hardware or software failure. Together with Partition Manager, Copy Wizard and other useful features, you can do mostly anything you want on hard disk with EaseUS Partition Master.

You must have this Partition Recovery Wizard if you care for safety of your partition and wish to be fully armed and ready for any personal, hardware or software failure, virus attack, or hacker's intrusive destruction partition loss. You can recover the deleted or lost partition with Partition Recovery Wizard - a reliable partition recovery tool.

How to recover partition:

1. Run EaseUS Partition Master, click "Wizard">"Partition recovery wizard".
2. Click "Next" to continue

There are two recovery modes: Automatic and Manual.

Automatic recovery mode to recover deleted or lost partitions:

Step 1: Select Automatic recovery mode and click "Next" to continue.

Step 2: Partition Recovery Wizard will search deleted or lost partitions on the unallocated space of all hard disks. After the search is completed, select the partitions which you want to recover and click "Next" to continue (You can double click the partition to explore the content to see whether it is the one you want to recover).

If Partition Recovery Wizard cannot find deleted or lost partitions with Automatic mode, you can choose "Complete search mode" of Manual mode or "Finish searching".

Step 3: You can see the recovered partitions which are marked with green dot on the disk map.

Step 4: Click "Proceed" to apply partition recovery and get the lost or deleted partitions back.

Manual recovery mode to recover deleted or lost partitions:

Step 1: Select Manual recovery mode and click "Next" to continue.

Step 2: Choose the unallocated space where you want to recover deleted or lost partitions from and click "Next" to continue.

Step 3: Choose search mode (There are two search modes: Fast and Complete), and then click "Next" to continue.

Step 4: Partition Recovery Wizard will search deleted or lost partitions on the selected unallocated space. Once a deleted volume is found, it will be displayed in the volume list (You

can double click the partition to explore the content to see whether it is the one you want to recover). Select the partitions you want to recover and click "Proceed" to continue.

Step 5: After Partition Recovery is proceeded, the deleted or lost partitions have been recovered.

Chapter 3

Other Features

Resize dynamic volume - resize dynamic volume without data loss.

Support command line - for easier disk management and run a batch file with no need for program running.

Repair RAID-5 volume - repair RAID-5 by reconstructing the data of the failed member on another disk.

Convert FAT partition to NTFS - to utilize the advantages of NTFS.

Wipe data on unallocated space - to offer a safer space for the new data.

Disk surface test - check or find bad sectors.

Convert primary to logical and vice versa - convert a primary volume to logical to create a fifth volume on a disk with 4 existed primary volumes.

Defragmentation - speed up your computer.

Chapter 4

Frequently Asked Questions about EaseUS Partition Master

Q: Why the program considers "bad disk" as the first hard disk when running EaseUS Partition Master under Windows 2000.

A: There's no Service Pack 4 under your Windows 2000.

Q: Both Linux and windows are installed; I established primary partition in front of the system partition. After that, I can enter neither of the two operating systems. Why?

A: It is caused by the mechanism to leading procedure of Linux operating system itself. It may destroy the leading order and Cause the unavailability of both Linux and window if you establish a new partition on condition that both Linux and windows are installed.

Q: There are two kinds of Windows operating systems respectively under different partitions. After entering Windows 2000, I ran EaseUS Partition Master, resized/moved the partition the system lies. Meanwhile, I established a new partition. Then I can enter Windows 2000 normally after restarting the computer. However, it breaks down on the landing interface for quite a long time. Please tell me what's the problem?

A: Both Your operations of resizing/moving the partition the system lies and establishing a new partition result the problem which are Caused by the mechanism of the operating system itself.

Q: Both Windows XP and Windows VISTA are installed, the partition that Windows XP lies is in the cylinder 1024 of the front area of hard disk. While if I only resize/move the partition of Windows XP that is beyond cylinder 1024(about 7G), after that, I cannot enter Windows XP, the system prompts that "ntldr lost" Why?

A: Since Boot Manager of Windows VISTA doesn't agree with Interrupt 13. Thus, to resize or move the system partition beyond cylinder 1024 will Cause the operating system cannot be found by Boot Manger of Windows VISTA.

Q: Sometimes, after I establish, resize or move the partition, but the partition hasn't drive letter, the procedure prompts "Update system information failed".

A: The operating system cannot update information in time accidentally.

Hardware requirements

EaseUS Partition Master requires a computer with at least X86 or compatible CPU with main frequency 500 MHz, a standard PC system with mouse, keyboard and color monitor, and the capability of the RAM memory equal or larger than 512MB, CD-R/RW, DVD-R/RW, DVD+R/RW or DVD+R DL drive for bootable media creation.

System requirements

EaseUS Partition Master provides support of the following operating systems: Windows 2000 Professional and Server/Advanced Server SP4, Windows XP Home Edition and Professional 32 bit and 64 bit Edition, Windows Vista 32 bit and 64 bit Edition, Windows Server 2003 32 bit and 64 bit Standard and Enterprise Edition, Windows Small Business Server 2003, Windows Home Server, Windows Server 2008 32 bit and 64 bit Standard, Enterprise and Datacenter Edition, Windows Web Server 2008, Windows 7 SP1 & Windows Server 2008 R2 SP1.

Please note that the Home and Professional version cannot support all server operating systems. You can refer to versions comparison for more details.

Supported file systems & hard disk types

EaseUS Partition Master supports the following file systems: FAT12, FAT16, FAT32, NTFS, EXT2 and EXT3.

IDE, EIDE, SATA, ESATA, ATA, SCSI, iSCSI, USB disk, and Firewire disk are all supported by EaseUS Partition Master. EaseUS Partition Master can support 8TB+ hard disk and 32 disks at most. EaseUS Partition Master can also support removable device, such as flash drive, memory card, memory stick and so on.

EaseUS Partition Master supports dynamic disk - resize & copy dynamic volume and GPT disks.

Chapter 5

About EaseUS

EaseUS, located in China and America, is a leading provider of storage management and data recovery solutions for millions of private and business users in more than 180 countries and areas. With years of experience, EaseUS software and service have been one of the pioneers in these fields.

Technical Support

For more information about EaseUS Partition Master, please visit our website:

<http://www.partition-tool.com/>

If you still cannot find what you are looking for and need further assistance, we encourage you to contact EaseUS Technical Support by support@easeus.com.

Contact Information

Sales Contact: sales@easeus.com

Product Support: support@easeus.com

Media Contact: media@easeus.com

..... The End.....